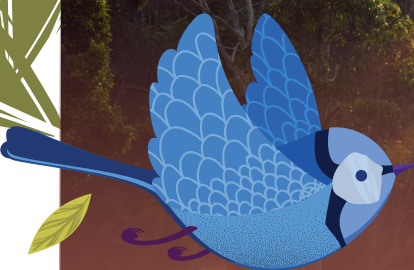


MUNDI

LIVE & BREATHE



A PLACE TO FLOURISH.

Set in a peaceful pocket of Mundijong, Mundi Estate brings together the space, nature and everyday convenience families need.

Here you're surrounded by bushland and nearby national park adventures, with walking trails, fresh air and room for kids to roam, while staying close to the essentials that make daily life easy.

Pick up groceries just down the road, meet friends at King Road Brewing Company (complete with playground and great food), or spend weekends exploring local farmers' markets filled with fresh produce and artisan finds. It's a place where weekday routines run smoothly, weekends feel relaxed and families can put down roots.

A PARCEL PROPERTY COMMUNITY.

Mundi is proudly delivered by Parcel Property; an experienced WA developer known for creating communities that balance liveability, connection, and long-term value. Parcel focuses on designing neighbourhoods where streets feel welcoming, parks become gathering places, and communities grow naturally. When you choose Mundi, you're not just buying land, you're joining a carefully considered Parcel community built for real life.



10min
BYFORD TRAIN
STATION



50km
TO PERTH CBD



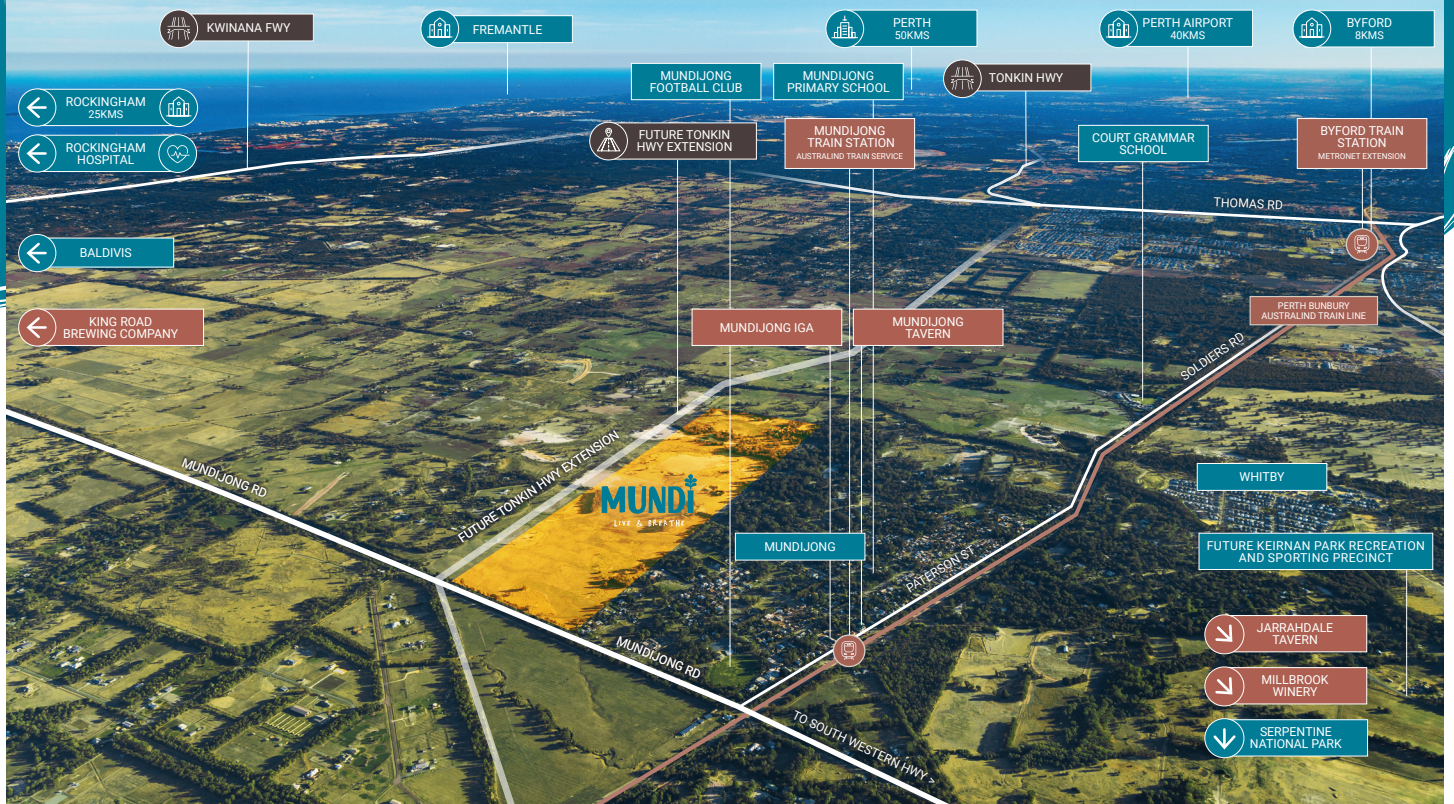
**Future
Tonkin Hwy
Extension**



parcel.

RA64283

Peaceful surrounds with everyday essentials nearby.



Education

- Mundijong Primary School (4 mins)
- Court Grammar School (7 mins)
- Jarrahdale Primary School (12 mins)
- Serpentine Primary School (9 mins)
- Murdoch University (26 mins)
- Kings College, Wellard (15 mins)
- Future Sikh Temple, Oldbury (4 mins)

Healthcare

- Rockingham Hospital (22 mins)
- Armadale Health Service (26 mins)
- Mundijong Family Practice (3 mins)
- Mundijong Pharmacy (3 mins)
- Serpentine Medical Centre (9 mins)

Parks & Beaches

- Serpentine National Park (11 mins)
- Watkins Road Nature Reserve (4 mins)
- Whitby Playground (6 mins)
- Langford Park (14 mins)
- Kitty's Gorge Waterfall Hike (12 mins)
- Cohunu Koala Park (13 mins)

Shopping

- Rockingham Centre (22 mins)
- Armadale Central Shopping Centre (23 mins)
- Baldivis Square (16 mins)
- Byford Village (14 mins)
- Mundijong IGA (3 mins)
- Mundijong Markets (5 mins)
- Serpentine Jarrahdale Community Resource Centre (4 mins)

Recreation

- Mundijong Football Club (3 mins)
- Serpentine Jarrahdale Men's Shed (5 mins)
- Clem Kentish Recreation Centre (9 mins)
- Serpentine Jarrahdale Community Recreation Centre (13 mins)
- Mundijong Netball Courts (3 mins)
- Mundijong Oval (3 mins)
- Byford Little Athletics Club (10 mins)
- Byford & Districts Country Club (17 mins)
- Future Keirnan Park Recreation and Sporting Precinct (4 mins)

Transport

- Kwinana Fwy (9 mins)
- Future Tonkin Hwy extension
- Mundijong Train Station on Australind Train Service (4 mins)
- Perth Airport (41 mins)
- Byford Train Station (10 mins)

Cafes & Restaurants

- Mundijong Tavern (3 mins)
- Mundijong Fish & Chips (3 mins)
- King Road Brewing Company (5 mins)
- Millbrook Winery (14 mins)
- Jarrahdale Tavern & Restaurant (11 mins)
- The Byford (12kms, 12 mins)
- Serpentine Falls Cafe Roadhouse (9 mins)
- Brother of Mine (16 mins)

NETWORK PROVIDED BY



2 YEAR

FRONT LANDSCAPING MAINTENANCE PACKAGE STAGES 1 - 3, 5 & 6



EXPECTED A CLASS* SOIL TYPE

*subject to individual lot assessments



COLOURBOND FENCING + FRONT LANDSCAPING

INCLUDED ON ALL BLOCKS

ALEXIS BUCKLEY-CARR

0411 618 906
abuckleycarr@parcelproperty.com.au

THANH NGUYEN

0414 288 165
tnguyen@parcelproperty.com.au

parcel.

RA64283